

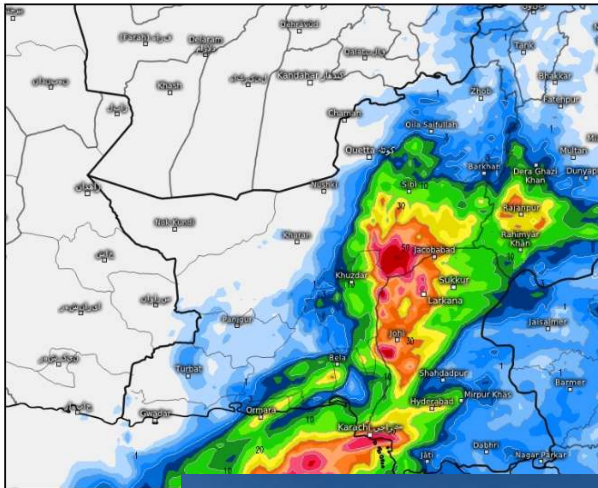


VOICE OF RMC QUETTA

Precipitation outlook 01st Aug to 14th Aug

August 2020

Issue 1



Highlights

- About G.C (P-2)
- Working environment of observatories improved
- improvement of Forecasting and seismic offices (p 6 to 7)
- Plan to carry out the works at Observatories page (9)

Regional Meteorological & Geophysical Center

Brewery Road, Post Box # 2, Quetta – Balochistan

Ph: +92-81-9213380, Fax: +92-81-9213388, Email: rmcqta@yahoo.com, web: <http://rmcbalochistan.pmd.gov.pk/>

The Regional Meteorological Center, Brewery Road, Quetta was established in 1951. Previously it was named as Geophysical Centre (GC), Quetta. The basic objective of GC, Quetta was to record seismic and Geomagnetic activities in the Balochistan region, as the north-western part of Balochistan region lies at high seismic active zone.

Gradually, the role of the office was extended, and it received the status of Regional Meteorological Center. RMC Quetta in 2016. Now, the centre controls various observatories all around the province and provides services related to Weather, Weather Forecast, Climate, Seismic activities, Ozone Layer etc

The primary aim of this publication is to highlight the status of primary data generating meteorological observatories because accurate observed data is of prime importance for monitoring and prediction of weather episodes and monitoring the earthquake events of the region . The report depicts strengths and weaknesses across observatories and emphasize for coordinated efforts at all levels to provide improved working environment in observatories. Instruments display centre has been upgraded at Geophysical Centre, Quetta which has been shown in report as well. Forecasting section has become operational round the clock.

Using social media, snaps of required work had been acquired from across the Balochistan region and few have been included in the report for visual assessment of working environment.

The efforts done by Regional Meteorological Center (RMC) for improving the working environment at Met stations during the last six months have also been highlighted.

I am pleased to acknowledge the efforts done by officers and staff of RMC for timely completing the assigned tasks specially Mr. Mukhtar Ahmed Magsi, Mr. Naeem Siddiqui (S,E.E),Mr. Amir Umar (E.E), Mr. Muhammad Aslam (O/I Forecasting & observatories) and Mr. Azhar Ali (AP) for their hard work.

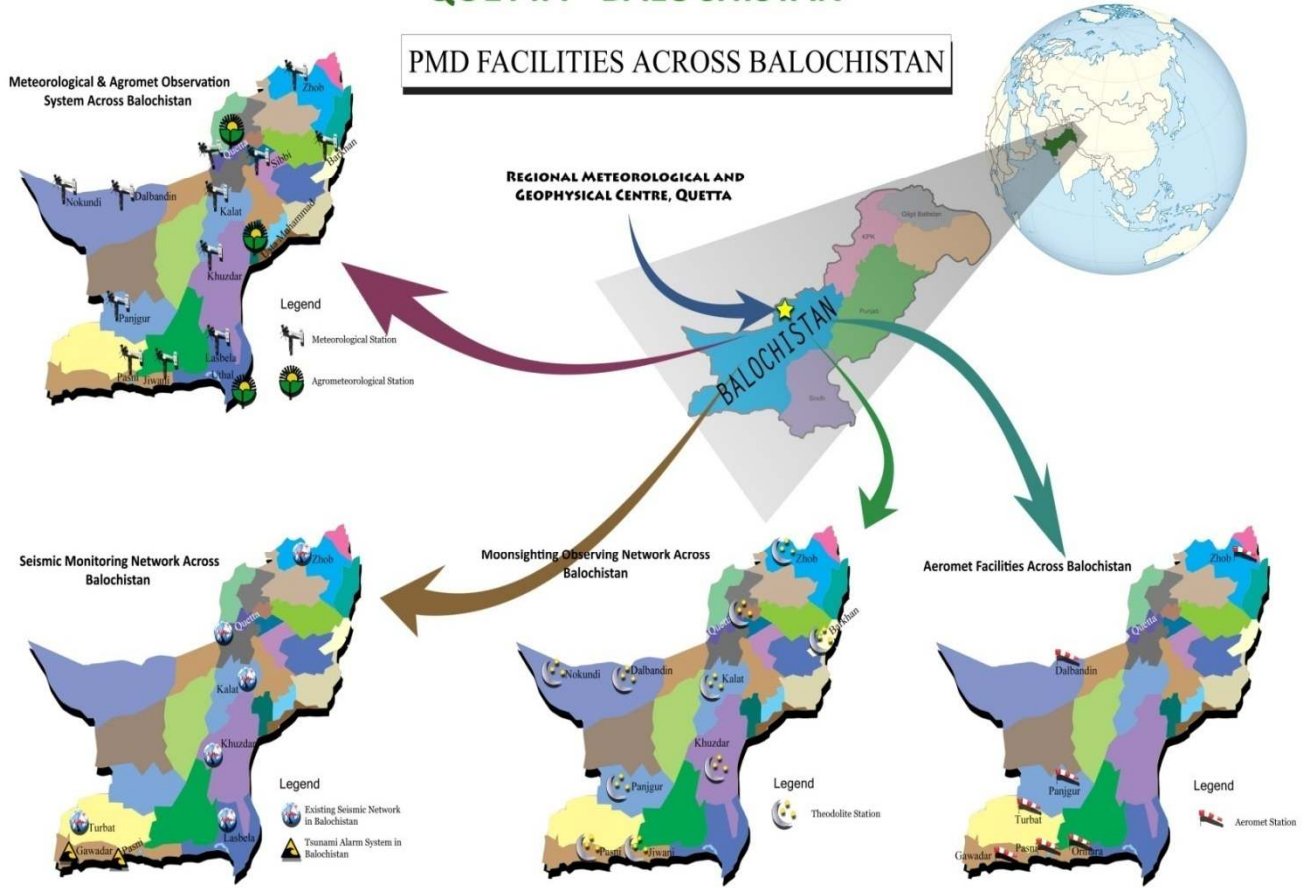
Mr. Najeeb Ahmed Amir

Director
RMC Quetta

Location Map of PMD Facilities across Balochistan



PAKISTAN METEOROLOGICAL DEPARTMENT REGIONAL METEOROLOGICAL AND GEOPHYSICAL CENTRE QUETTA - BALOCHISTAN



Contact Details: P.O Box No. 02, Brewery Road, Quetta
Tel NO. 081-9213388 Fax No. 0819213380 Email rcdpcquetta@gmail.com

Summary

Being the primary data generation and reporting units, meteorological observatories need to be patronized the most in the structure of a Meteorological Service. However, the met stations located across Balochistan require improvement and up gradation with new instruments. Keeping in view the gravity of situation, immediate attention was given to improve the overall conditions of observatories and data acquisition instruments to build the image of PMD as a progressive national institution.

There are 18 meteorological observatories under the control of RMC Quetta. During the period , most observatories had been white washed and DC power supply has been arranged for some stations where electricity problem was high also replaced old Met Instruments to improve the quality of data acquisition. Investment was made to maintain the faulty instruments and made operational after years of dormancy. Observatories staff was also encouraged to invest in maintaining of met instruments and assured for re-imburement on priority basis that the staff feel ownership of valuables at the observatories.

The seismic network has also been improved and made operational by installation of new batteries. The seismic visualization systems have been improved at Geophysical Center as well as at Regional Seismic Monitoring Center Quetta that are contributing in image building of PMD to visitors from allied institutions, universities, NGOs and media. The Seismological display centre of Geophysical Centre Quetta has been up graded. Site survey of a new seismic stations of coastal belt of Balochistan has been completed by survey team of RMC, Quetta. Installation of instruments would be completed as & when the seismic vaults of same sites would be completed.

Regional Forecasting and Research Center is actively contributing to regional forecast needs of various stakeholders including Armed forces, NHA, PDMA, orchard growers and general public at large.

A whatsapp group has been created by Incharge forecasting office RMC, Quetta through which the daily weather forecast of Balochistan and alertness of all weather phenomena are shared so that necessary arrangements would be made timely by responsible agencies/organizations.

Due to highly deteriorated condition of infrastructure, the fund availability to RMC Quetta needs to be enhanced many fold. At least Rs. 20 million are immediately required to improve the outlook of regional center and installation of water bore

facility. Detailed PC-1s are already submitted to cater the infrastructure development needs.

Improved working environment at Geophysical Centre Quetta and its units

- **Improved Work of Director Block**
- **Up Gradation of Seismic Instruments Display Centre and installation of Aluminium front door of Forecasting office**
- **construction of three underground water tank at G.C Quetta office and one water tank at M.O Sibi**
- **costruction of three underground water tank at G.C Quetta residential Quarters**
- **roof treatment of RAMC SARIAB and Admin Block G.C Quetta**
- **repacement of Tsunami Alarm systems at Pasni and Gawadar**

IMPROVEMENT OF DIRECTOR BLOCK RMC, QUETTA

Director block is comprised of three rooms and a Hall. All the rooms including hall have been upgraded with wall sheets and the old furniture/ceiling both have been replaced.



Deputy Director Room



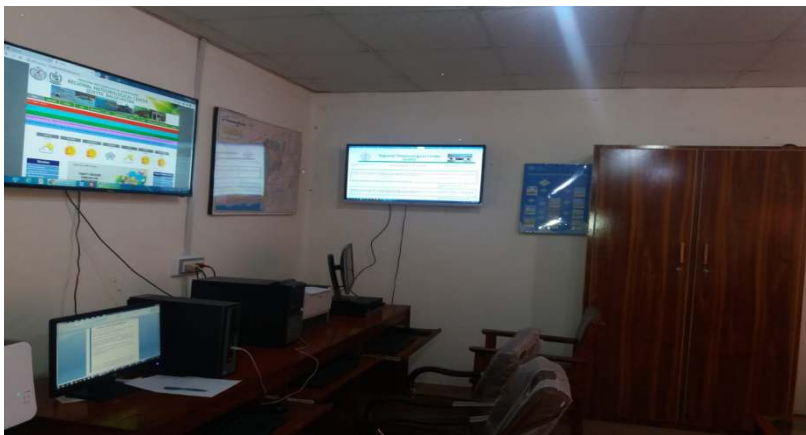
Director Room

IMPROVEMENT OF SEISMIC DISPLAY CENTRE

Seismic display centre has been upgraded with installation of two more LEDs for viewing the seismic phases of Seiscomp3 and All seismic stations of Balochistan have been included in network for better interpretation of occurred **events**.

OPERATIONALIZATION OF FORECASTING CENTRE ROUND THE CLOCK

Forecasting office has been operational from dawn to dusk, round the clock. Daily weather forecast is being issued to media and relevant agencies. Installation of LEDs in forecasting centre for better display during briefings.



Forecasting office Quetta

TSUNAMI ALARM SYSTEMS AT GAWADAR AND PASNI

Coastal belt of Balochistan is highly vulnerable for disasters of Tsunami because of Makran subduction zone. Tsunami alarm system towers are installed at Gawadar and Pasni but require replacement. A project regarding replacement of TSUNAMI alarm Towers at Gawadar and Pasni is under process with collaboration of UNDP.

At present 15 meteorological, 3 agromet and 6 seismic stations are working under Regional Meteorological Center (RMC) Quetta.. Officer In charge (Observatories) Mr. Muhammad Aslam (A.M) has been assigned the duties to carry out necessary planning for maintaining the observatories and develop new meteorological enclosures as per requirement. In first step, the white wash work of following Met units was carried out keeping in view the availability of budget.

PBO Sheikhmanda Quetta, RAMC Sariab, PBO Dalbandin, PBO Kalat etc.



PBO sheikhmanda Ouetta



RAMC SARIAB



PBO Dalbandin









seismic display centre

**PLANING AND DETAIL OF REPAIR/RECONSTRUCTION WORK REQUIRED
AT METEOROLOGICAL OBSERVATORIES WORKING UNDER RMC
QUETTA**

S.No	Station	Required Work
1	PBO Nokkundi	Reconstruction of boundary wall (3100 feet length and 8 feet height) with new main Gate and repair of office building
2	PBO Jiwani	Establishment of Enclosure & repair of office building
3	SRRC Shiekhmanda	Construction of boundary wall (1800 feet length and 8 feet height)
		Conversion of electric power tube well into solar power system
4	PBO Khuzdar	Plaster Repair of boundary wall and 04 Quarters with estimate of new main gate
5	Seismic Observatory Khuzdar	Construction of new boundary wall (1800 feet long and 08 feet height) with new gate and repair of office building
6	Met Observatory Sibi	Construction of new boundary wall (1600 feet long and 08 feet height) with new gate and repair of office building
7	Geophysical Centre Quetta	Repair of Director Bungalow buildings and approach road to the residential buildings.
8	M.O Lasbella	Establishment of Enclosure & repair of office building

The condition of infrastructure is very fragile and require major investment for reconstruction. Coordinated and progressive efforts are requested that would help contribute in projecting positive image of PMD

Visual Clips of the required work at Observatories

<p><u>PBO Nokundi</u></p>		
	<p><u>Boundary Wall</u></p>	<p><u>Residential Quarter</u></p>
<p><u>PBO Jiwani</u></p>		
	<p><u>instruments</u></p>	<p><u>building</u></p>
<p><u>Seismic Observatory Khuzdar</u></p>	<p style="text-align: center;"><u>Boundary wall needs to be establish for safety</u></p> 	
<p><u>M.O Sibbi</u></p>	 <p style="text-align: center;"><u>Wall is just 2 ft . Wild trees are protective</u></p>	